

# CPS Georgia Ltd



## Company Presentation

29 Ekvtime Kheladze Str., 0156,  
Tbilisi, Georgia

Tel: +995 577 995 996

E-Mail: [info@cpsge.com](mailto:info@cpsge.com)

Web: [www.cpsge.com](http://www.cpsge.com)



# Company Profile

- CPS Georgia was formed in 2007, and is a member of CPS Group of Companies, with operations in the United Kingdom, Belgium, Hong Kong, Russia, Kazakhstan and Georgia.
- CPS Group is a trading & service entity, representing and acting as authorised dealer, distributor and service provider for world renowned brand names and O.E.M.
- During last decade CPS Georgia has earned market acceptance as solid, reliable and knowledgeable supplier of machinery and related products, serving the following sectors and industries:
  - Mineral processing (e.g - Production of Aggregate, sand, and cement.)
  - Filtration technology - for industrial Diesel engines, Diesel and JET fuel storage tanks, Industrial, water and solid liquid filtration solutions.
  - Wear & spare parts - For earth moving plant, Agriculture & farming machinery, Quarry plant, construction and road building machinery.
  - Water treatment - Consultant & importers of equipment to remove contaminants from urban and industrial wastewater.
  - Currently the company conduct in-depth study with the intention of becoming active in waste management and solutions, and renewable energy.



# Products & Brands

- CPS Georgia is recognised as market leader in supplying and providing after market support for latest technology in mineral processing machinery, serving static & mobile application.
- The range of machinery consists of all type of raw material crushers, aggregates screens and washing plant, conveyors, feeders, control unit, electric cabinets, and steel structure such as silos, etc
- CPS Georgia has executed, and does obtain the resources & capability to deliver turn-key projects, from design stage to commencing of quarry operation and to provide future on-going service.





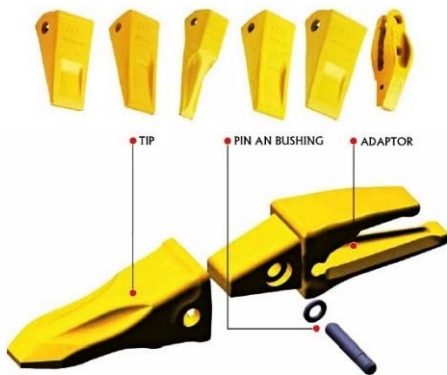
# Products & Brands

- Engine filtration: Air, Oil, Diesel & Hydraulic Filters for industrial diesel engines, building & agriculture machinery
- Industrial filtration & Dust collectors
- Process and Compressed air filtration systems
- Aviation and Jet Fuel filtration
- Diesel bulk fuel filtration



# Products & Brands

- Ground Engaging Tools: Teeth, adapters, blades, end-bits and wear parts for buckets
- Undercarriage: track chains, shoes, rollers, sprockets, idlers shoes and pads
- Repair parts: Frame components, transmission parts, engine parts, cooling system parts, hydraulic parts and pumps for earth moving machines



# Products & Brands

- Hydraulic attachments for excavators:
- Bucket Crushers and Screens
- Earth moving equipment buckets
- Hydraulic hammers
- Demolition scrap shears, grapples, rippers
- Rotary cutter heads, vibrating plate compactors

**HARTL** CRUSHER

**ITR** **USCO**

**SIMEX**



**CPS**  
georgia



# Products & Brands

- Work lifts and platforms used in construction, maintenance, warehouse stocking, and equipment installation:
  - Aerial Work Platforms
  - Boom Lifts & Material Lifts
  - Scissor Lifts & Vertical Lifts
  - Telehandlers
  - Light Towers



# Other Products & Brands

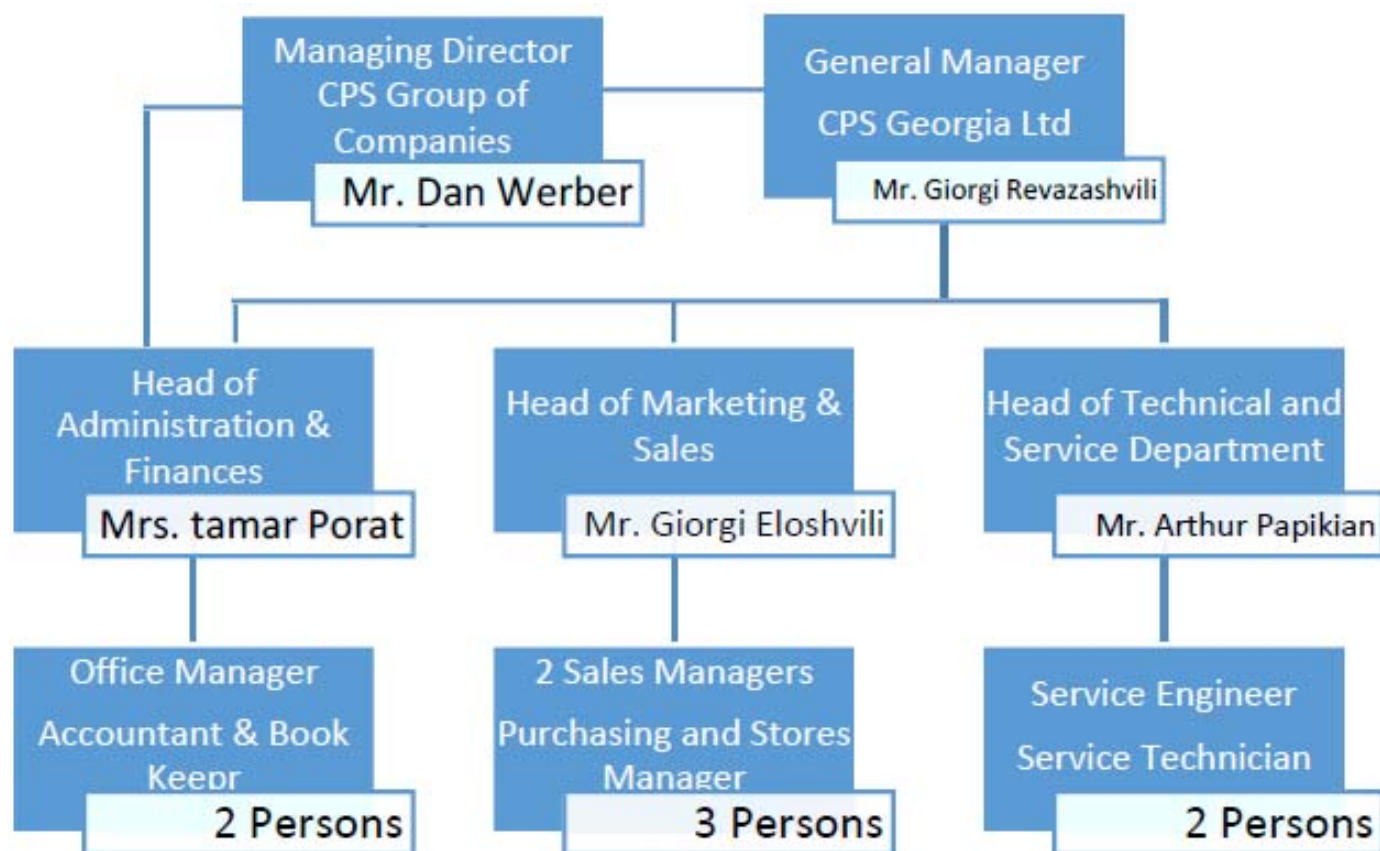
- CPS Georgia is providing local companies the service of sourcing, pre-purchasing inspection, forwarding, e.g- importing and delivering new and second-hand earth moving machinery e.g- Excavators, Dozers, wheel loaders and motor graders, mobile cranes, dumpers, concrete & asphalt handling machinery.
- We supply Genuine and Premium Quality Aftermarket wear and spare parts for wide range of quarry & mining, construction and agriculture equipment and engine manufacturers such as: Caterpillar®, Komatsu®, Volvo®, CNH®, Terex®, Metso®, Atlas Copco®, John Deere®, JCB®, Case®, Hitachi®, Hyundai®, Doosan®, Cummins®, Perkins®, Scania®, Deutz®, etc.





# Company Organizational Chart

We are an energetic, flexible, and open-minded team ready to work hard for our customers and partners



# Our Facilities

During 2017 we have completed (self financed) construction of our facility consisting of:

- 180 Sq/M - offices, board-room, and admin. area.
- 120 Sq/M - Indoor fully equipped work shop & service area.
- 500 Sq/M - Warehouse and storage area.
- 100 Sq/M - External storage of lubricants, compressed air and hazardous material.
- In addition the company has secured land reserves for future expansion.



# Service Capabilities

- Our staff does consistently attend technical seminars, technical & marketing training, acquire qualifications and diplomas related to our trade
- As a result our customers benefit from manufacturer authorized assistance, warranty, trainings, full aftermarket & technical services.
- Company has workshop equipped with necessary tools and equipment for servicing equipment as well as mobile workshop van for conducting heavy machinery service at operating sight.





# Pride in Service

**Fast and efficient  
processing of orders and  
customer inquiries**

**On-site delivery of the  
products ordered**

**Supplying wear and spare  
parts**

**Conducting manufacturer  
authorized assistance and  
technical services**



**Customer Satisfaction**

**Providing technical  
literature and professional  
trainings**

**Delivering warranty  
services**

**Conduction on-site  
technical services for  
building machinery**

**Highly qualified personnel  
and modern “know how”  
implementation**

# WE ARE AT YOUR SERVICE



**29 Ekvtime Kheladze Str., 0131,  
Tbilisi, Georgia**

**Tel: +995 577 995 996**

**E-Mail: [info@cpsge.com](mailto:info@cpsge.com)**

**Web: [www.cpsge.com](http://www.cpsge.com)**

**Facebook: [facebook.com/CpsGeorgia](https://facebook.com/CpsGeorgia)**

